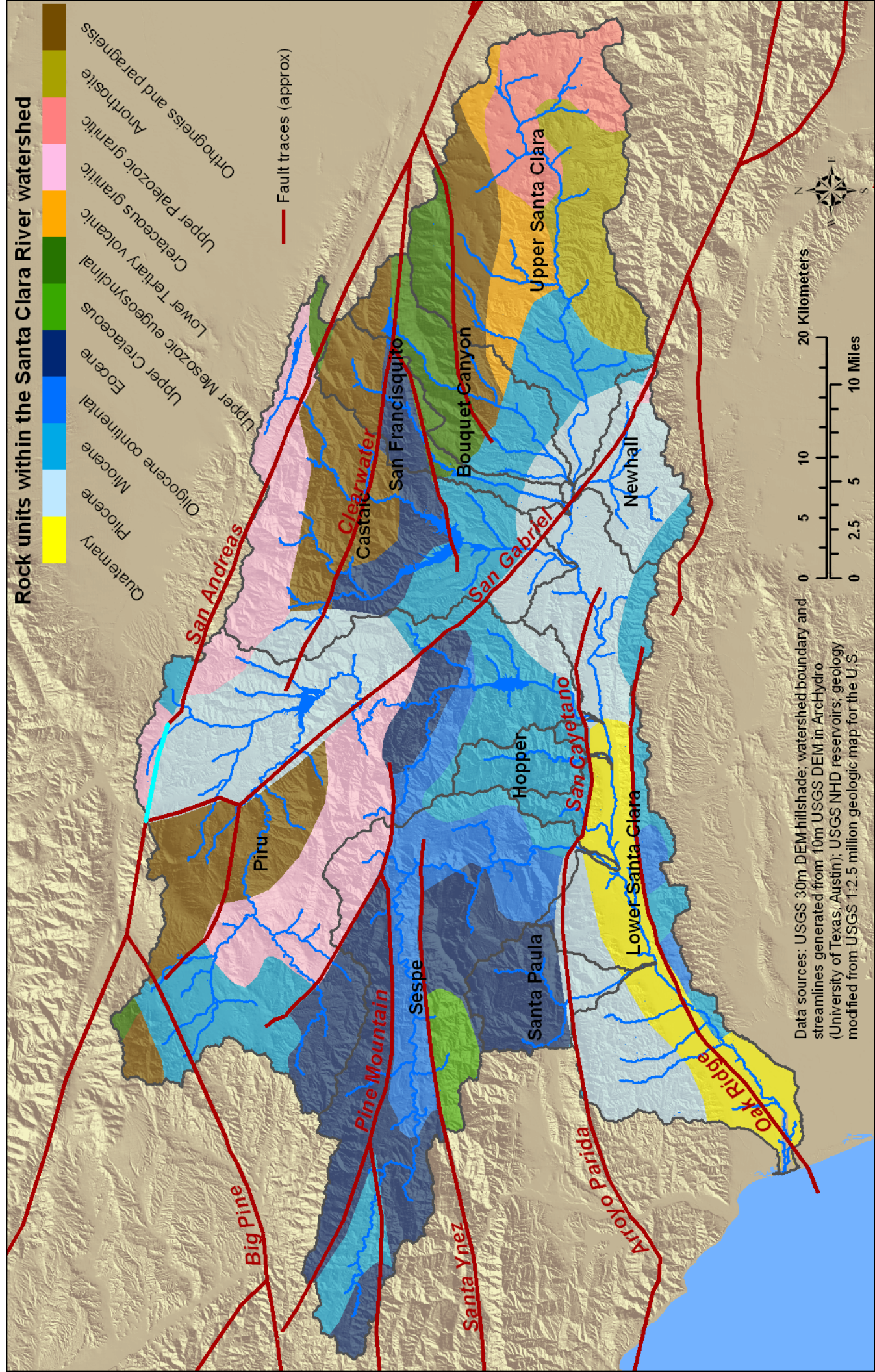


Rock units within the Santa Clara River watershed

- Quaternary
- Pliocene
- Miocene
- Oligocene continental
- Eocene
- Upper Cretaceous
- Upper Mesozoic eugeosynclinal
- Lower Tertiary volcanic
- Cretaceous granitic
- Upper Paleozoic granitic
- Anorthosite
- Orthogneiss and paragneiss

— Fault traces (approx)



20 Kilometers

10 Miles

Data sources: USGS 30m DEM hillshade; watershed boundary and streamlines generated from 10m USGS DEM in ArcHydro (University of Texas, Austin); USGS NHD reservoirs; geology modified from USGS 1:2.5 million geologic map for the U.S.