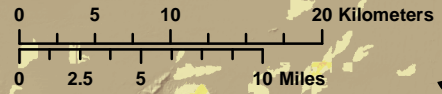
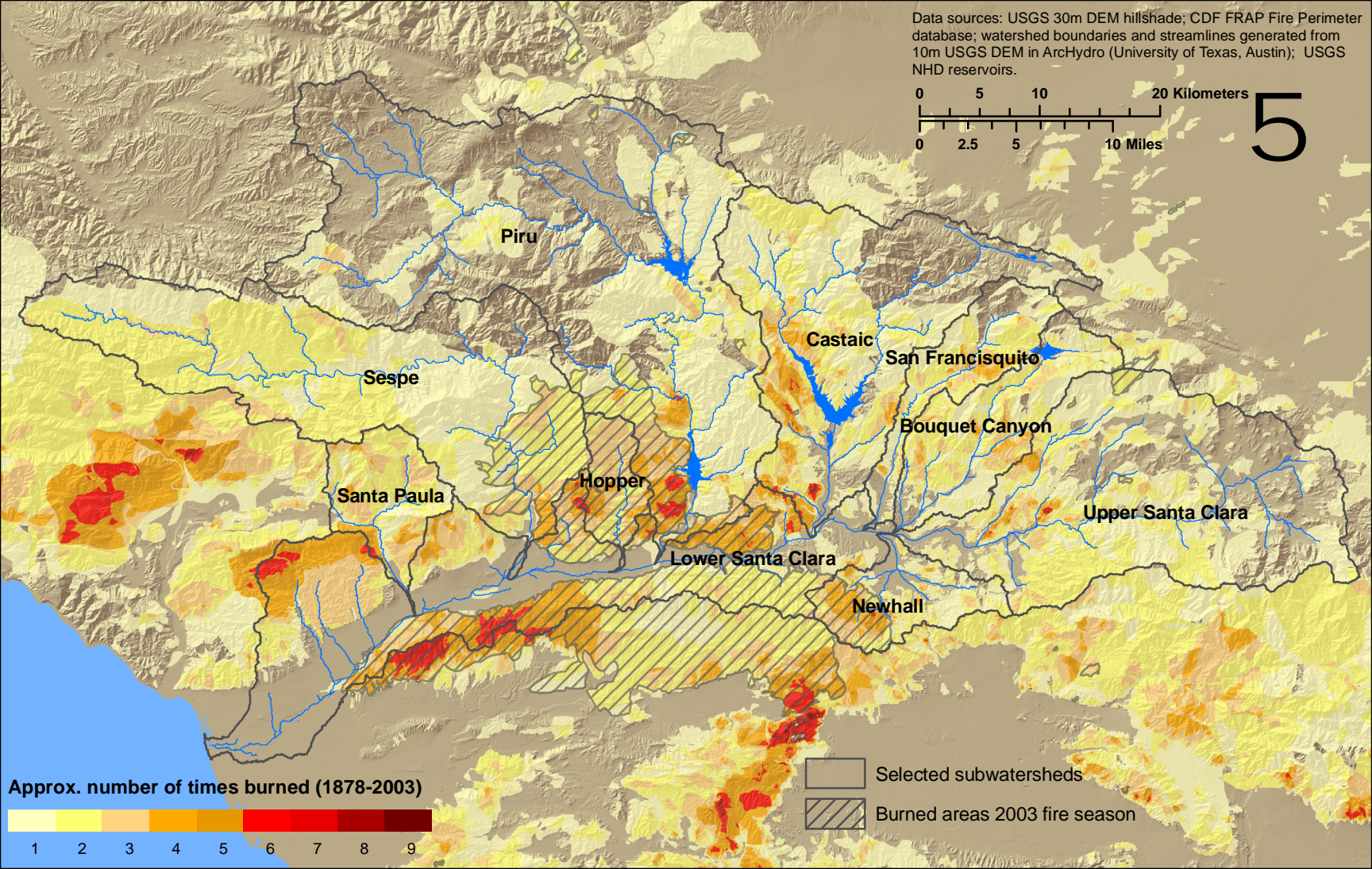


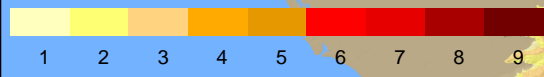
Data sources: USGS 30m DEM hillshade; CDF FRAP Fire Perimeter database; watershed boundaries and streamlines generated from 10m USGS DEM in ArcHydro (University of Texas, Austin); USGS NHD reservoirs.



5



Approx. number of times burned (1878-2003)



- Selected subwatersheds
- Burned areas 2003 fire season